



Certificate of Analysis

CANNABUSINESS LABORATORIES, LLC

Sample ID **230414014**
 Order Number **CB230414008**
 Sample Name **FLW-041123-3**

External Sample ID

Received Date **4/14/2023**
 COA Released **4/20/2023**

Batch Number
 Product Type **Flower**
 Sample Type **Flower**

Comments

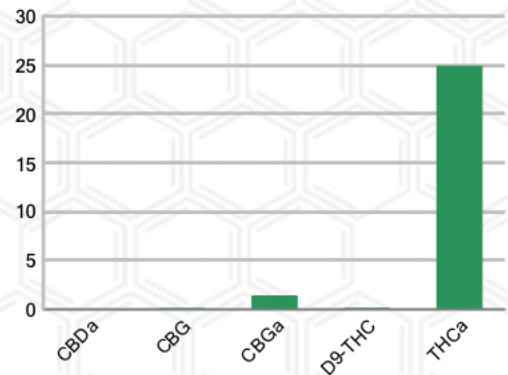
CANNABINOID PROFILE

Analyte	LOQ (%)	% Dry Weight	mg/g
CBC	0.01	ND	ND
CBD	0.01	ND	ND
CBDa	0.01	0.070	0.697
CBDV	0.01	ND	ND
CBG	0.01	0.142	1.423
CBGa	0.01	1.430	14.30
CBN	0.01	ND	ND
d8-THC	0.01	ND	ND
d9-THC	0.01	0.166	1.660
THCa	0.01	24.93	249.3
Total Cannabinoids		26.74	267.4
Total Potential THC		22.03	220.3
Total Potential CBD		0.061	0.611
Total Potential CBG		1.398	13.98
Ratio of Total Potential CBD to Total Potential THC			0.00 : 1
Ratio of Total Potential CBG to Total Potential THC			0.06 : 1

SAMPLE IMAGE



CANNABINOIDS % Dry Weight



*Total Cannabinoids refers to the sum of all cannabinoids detected.

*Total Potential CBD = (0.877 x CBDa) + CBD. *Total Potential THC = (0.877 x THCa) + THC. *Total Potential CBG = (0.877 x CBGa) + CBG.

*Total Potential THC/CBD are calculated to take into account the loss of an acid group during decarboxylation.



Jamie Hobgood
 Laboratory Manager

SIGNATURE

Jamie Hobgood

LABORATORY MANAGER

04/20/2023 10:12 AM

DATE

This product has been tested by CannaBusiness Laboratories using validated testing methodologies and a quality system. Values reported relate only to the product tested. CannaBusiness Laboratories makes no claims as to the efficacy, safety, or other risks associated with any detected or non-detected levels of any compounds reported herein. This Certificate shall not be reproduced except in full, without the written permission of CannaBusiness Laboratories. Photo is of sample received by the lab and may vary from final packaging. The results apply to the sample as received.